

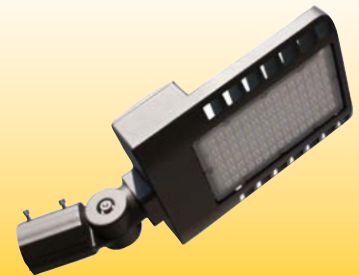
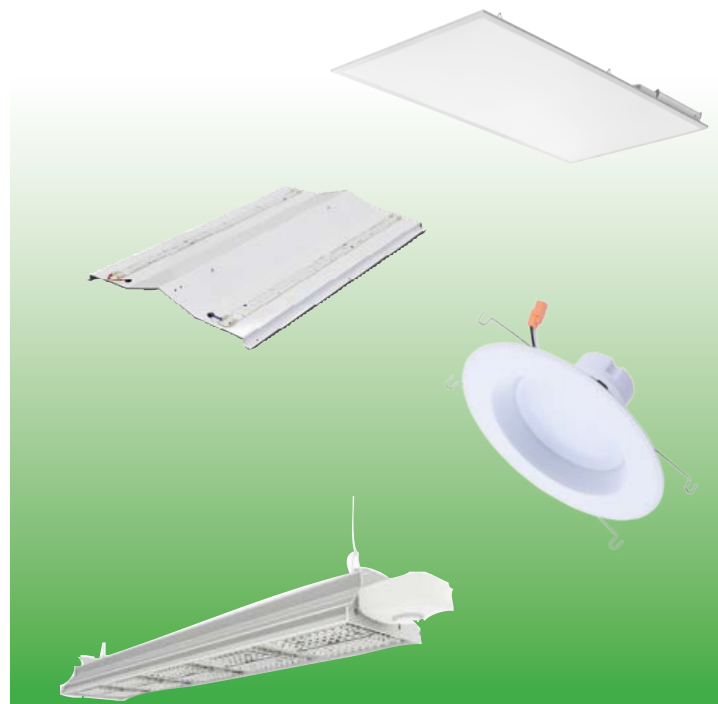


**FOREST LIGHTING**

Sustainable illumination

# LED Lamps and Luminaires

*Affordable Performance™*



Forest Lighting, 2252 Northwest Pkwy SE, Suite D, Marietta, GA 30067 800-994-2143

[www.forestlighting.com](http://www.forestlighting.com)

# LED Indoor Lamps



**univ8™**  
LED T8

works with  
or without Ballast

## UNIV8 T8 LED Linear Lamps

- Lengths: 2' & 4'
- 8W / 12W / 15W
- 1000 - 2000 Lumens
- 3000K / 3500K / 4100K / 5000K / 6000K
- 50,000 Hours
- 110 – 277V, Direct AC Input,



## T8 LED Linear Lamps

- Lengths: 2' & 4'
- 12W / 15W
- 1200 / 1900 Lumens
- 3000K / 3500K / 4100K / 5000K / 6000K
- 50,000 Hours
- 110 – 277V, Direct AC Input



## T8 Integrated LED Linear Lamps

- Lengths: 2' & 4'
- 12W / 19W
- 1200 / 2000 Lumens
- 3000K / 3500K / 4100K / 5000K / 6000K
- 50,000 hours
- 110 – 277V, Direct AC Input
- Connectable up to 20 feet



## T5 Integrated LED Linear Lamps

- Lengths: 1' 2' 3' 4'
- 5W / 12W / 14W / 19W
- 550 - 2000 Lumens
- 3000K / 3500K / 4100K / 5000K / 6000K
- 50,000 hours
- 110 – 277V, Direct AC Input
- Connectable up to 20 feet



## LED BR30 Lamps

- Dimmable
- 11W
- Equivalent Incandescent: 65W
- 3000K / 4000K / 5000K
- CRI >90,
- 25,000 hours



## LED BR40 Lamps

- Dimmable
- 13W
- Equivalent Incandescent: 75W
- 3000K / 4000K / 5000K
- CRI >90,
- 25,000 hours



## LED PAR30 Lamps

- Dimmable
- 12W
- Equivalent Incandescent: 75W
- 3000K / 4000K / 5000K
- CRI >90,
- 25,000 hours
- Ideal for track lighting



## LED PAR38 Lamps

- Dimmable
- 15W
- Equivalent Incandescent: 100W
- 3000K / 4000K / 5000K
- CRI >90
- 25,000 hours
- Ideal for track lighting



## LED A19 Lamps

- Omnidirectional, >300° beam angle
- Familiar A-lamp shape
- Dimmable
- 9W / 11W / 15W
- Equivalent Incandescent: 60W, 75W, 100W
- 2700K / 3000K / 5000K
- 25,000 hours



# LED Indoor Fixtures



- Wireless Control and Daylight Harvesting Available



## LED Troffer Retrofit Kit

- 2x2' & 2x4' Kits
- 20W / 24W / 28W / 35W / 45W / 48W / 56W
- 2300 - 6050 Lumens
- 50,000 Hours
- Dimmable
- Easy and quick to install



- Wireless Control and Daylight Harvesting Available



## LED Flat Panel

- 2x2' & 2x4' Models
- 20W / 30W / 35W / 50W
- 2600 - 6300 Lumens
- 3500K / 4000K / 5000K
- 50,000 Hours
- 110 - 277V
- Dimmable
- Delivers even, Soft Lighting
- Stylish Design



## LED High Bay Linear Fixtures

- 100W / 150W / 200W
- 13,000 / 19,500 / 26,000 Lumens
- 5000K
- 50,000 Hours
- 100 - 277V
- Integrated motion (PIR) sensor
- Suitable for damp locations



## LED Down Lights

- 4", 5" and 6" Models
- 10W / 15W
- 700 / 1050 Lumens
- 3000K / 4000K / 5000K
- >90 CRI
- 35,000 Hours
- Dimmable
- Stylish Appearance
- Easy To Install

# LED Outdoor Fixtures



## LED Wall Packs

- 20W / 30W
- 2000 / 3000 Lumens
- 5000K
- Easily installed in outdoor wall mounted applications
- Photocell included
- IP65, suitable for wet locations
- 50,000 hours



## LED Wall Packs

- 50W / 80W
- 5800 / 9800 Lumens
- 5000K
- Easily installed in outdoor wall mounted applications
- Photocell Optional
- IP65, suitable for wet locations
- 50,000 hours



## LED Area Light

- 90W / 100W / 220W / 300W / 380W
- 10800 - 46000 Lumens
- 5000K
- Thin, smart and stylish shape
- IP65, suitable for wet locations
- 100V - 480V
- 50,000 hours



## LED Canopy Light

- 45W / 80W
- 4948 / 9548 Lumens
- 5000K
- IP65, suitable for wet locations
- 50,000 hours

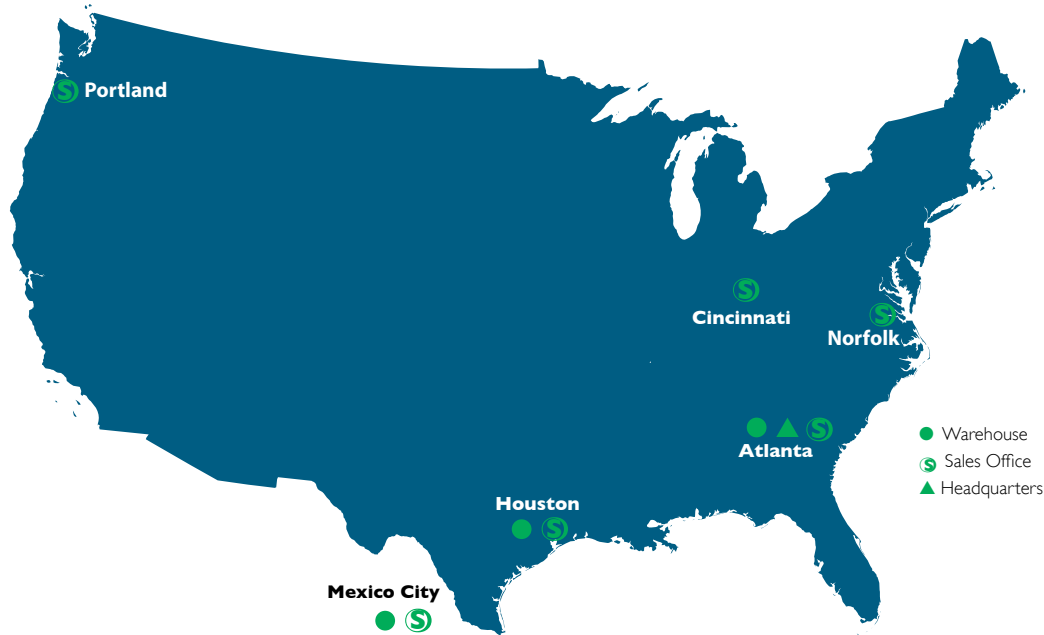
## About Our Parent... MLS of China

Founded in 1997, MLS Co., Ltd. of Zhongshan City is the largest packaged LED manufacturer in China and ranks in the top 5 in the world. With revenue approaching \$3 billion, MLS manufacturing capacity is unmatched, exceeding hundreds of billions units annually. Its 18,000 employees are dedicated to innovation, quality and sustainability. MLS LED products serving global markets include lamps and luminaires for indoor and outdoor applications. [www.zsmls.com](http://www.zsmls.com)



## Forest Lighting... Ready To Serve You Today

With well-stocked warehouses in Houston and Atlanta, Forest Lighting is a phone call away from overnight shipping. We are partners with all major electrical distributor organizations, with many stocking locations. Our affordable LED lighting products can make the difference in the decision to save energy and move to modern lighting technology.



**Corporate Headquarters**  
2252 Northwest Parkway, SE  
Suite D Marietta, GA  
770-702-7817  
**Houston Office & Warehouse**  
Houston, TX  
(Territory: South Central USA)  
281-600-8222

**Sales Offices**  
**Northeast**  
Norfolk, VA  
281-394-7602  
**Southeast**  
Atlanta, GA  
281-394-7616

**Midwest**  
Cincinnati, OH  
281-394-7600  
**South Central**  
Houston, TX  
281-394-7603  
**West**  
Portland, OR  
281-394-7685

