



T5 LED Integrated Lamp

Forest Lighting T5 LED Integrated Lamps are designed to perform efficiently in conditions where fluorescent, halogen and low voltage luminaires have traditionally been used. Our LED tubes incorporate integral drivers, are self-supporting, and can be surface-mounted. Individual units can be plugged together for continuous lengths up to 20 feet. Forest Lighting T5 LED Integrated Lamps connect directly to line voltage and can be used in any interior space.

T5 INTEGRATED LAMP MODELS

MODEL NO.	NOMINAL LENGTH	INPUT POWER (W)	CCT	DELIVERED LIGHT OUTPUT (LM)
T5N130	1'	5	3000K	550
T5N135	1'	5	3500K	550
T5N141	1'	5	4100K	550
T5N150	1'	5	5000K	550
T5N160	1'	5	6000K	550
T5N230	2'	12	3000K	1231
T5N235	2'	12	3500K	1231
T5N241	2'	12	4100K	1231
T5N250	2'	12	5000K	1231
T5N260	2'	12	6000K	1231
T5N330	3'	14	3000K	1462
T5N335	3'	14	3500K	1462
T5N341	3'	14	4100K	1462
T5N350	3'	14	5000K	1462
T5N360	3'	14	6000K	1462
T5N430	4'	19	3000K	1998
T5N435	4'	19	3500K	1998
T5N441	4'	19	4100K	1998
T5N450	4'	19	5000K	1998
T5N460	4'	19	6000K	1998

FEATURES & BENEFITS

- Operates directly from line voltage
- Usable as a stand alone fixture
- Units plug together
- Suitable for damp locations
- For use with G5 connectors
- Rated lifetime of 50,000 hrs
- DLC Listed for utility rebate

WARRANTY
5 Year Warranty



LISTINGS AND CERTIFICATIONS



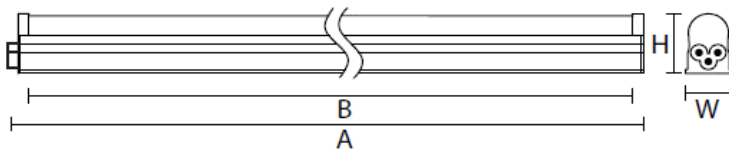
T5 Integrated LED Lamp

SPECIFICATION INFORMATION

Input Voltage	100-277V , 50/60Hz
Base	G5
Correlated Color Temperature (CCT)	3000K, 3500K, 4100K, 5000K, 6000K
Color Rendering Index	>80
Beam Angle	120°
Operating Temperature	-20° ~ +40°C

MECHANICAL SPECIFICATIONS

Model Series	Dimensions			Weight
	A	B	H x W	
T5N1	12.31"	11.56"	1.18" x 0.87"	1.69 oz
T5N2	22.90"	22.15"	1.18" x 0.87"	3.20 oz
T5N3	34.95"	34.20"	1.18" x 0.87"	4.72 oz
T5N4	46.96"	46.21"	1.18" x 0.87"	5.33 oz



ORDERING INFORMATION CLIP 1.JPG

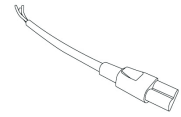
Example: T5N141

Product	Size	CCT
T5N	1 1'	30 3000K
	2 2'	35 3500K
	3 3'	41 4100K
	4 4'	50 5000K
		60 6000K

PARTS AND ACCESSORIES

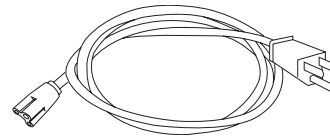


T5 Endcap, - EC-T5
(Included)

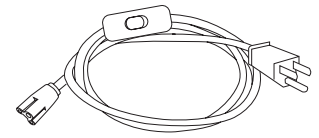


12" T5 Power Connector, - T5 DE-PW-CONN
(Included)

6" T5 Power Connector, - T5 DE-PW-CONN
(not included)



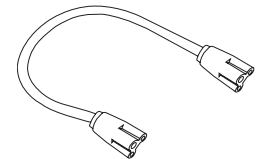
36" T5 Power Cord - INT-36-PC
72" T5 Power Cord - INT-72-PC



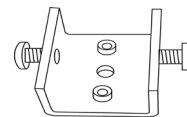
36" T5 Power Cord - INT-36-PC-SWITCH
72" T5 Power Cord - INT-72-PC-SWITCH



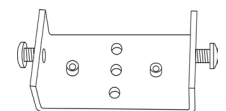
12" Male to Female Jumper Cable - INT-M2F-J
24" Male to Female Jumper Cable - INT-M2F-J-24
36" Male to Female Jumper Cable - INT-M2F-J-36



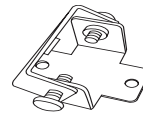
12" T5 Connector Cable - INT-M2M-J
24" T5 Connector Cable - INT-M2M-J-24
36" T5 Connector Cable - INT-M2M-J-36
48" T5 Connector Cable - INT-M2M-J-48



Heavy Duty Clip T5N-C-UM



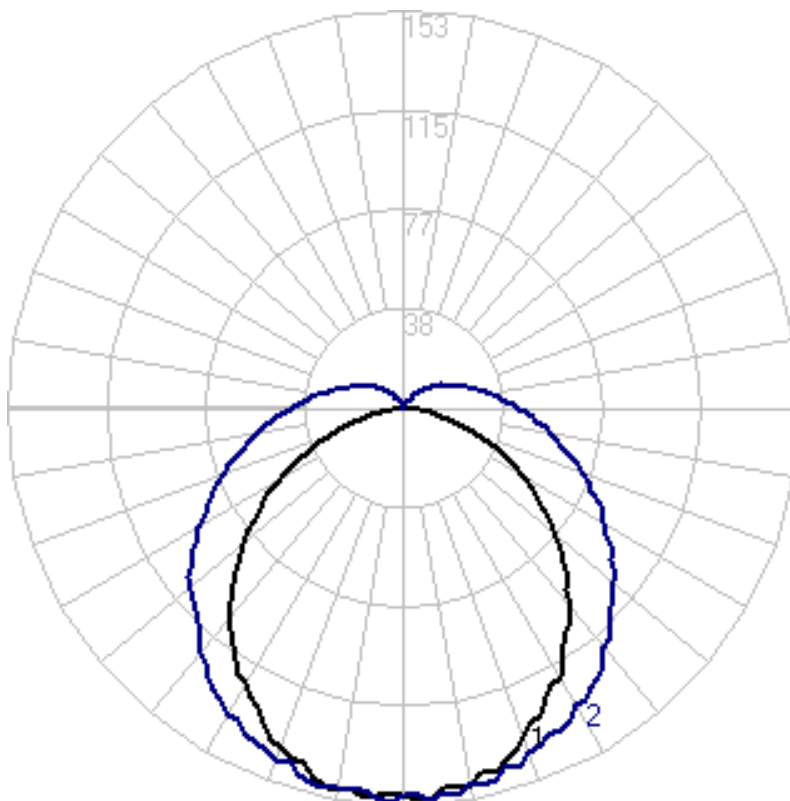
Heavy Duty Double Wide Clip T5N-DC-UM



Tilt Stand N-TL-UM

T5 Integrated LED Lamp

PHOTOMETRY



Curve 1: 0 degree
Curve 2: 90 degree

T5N230

Performance Data

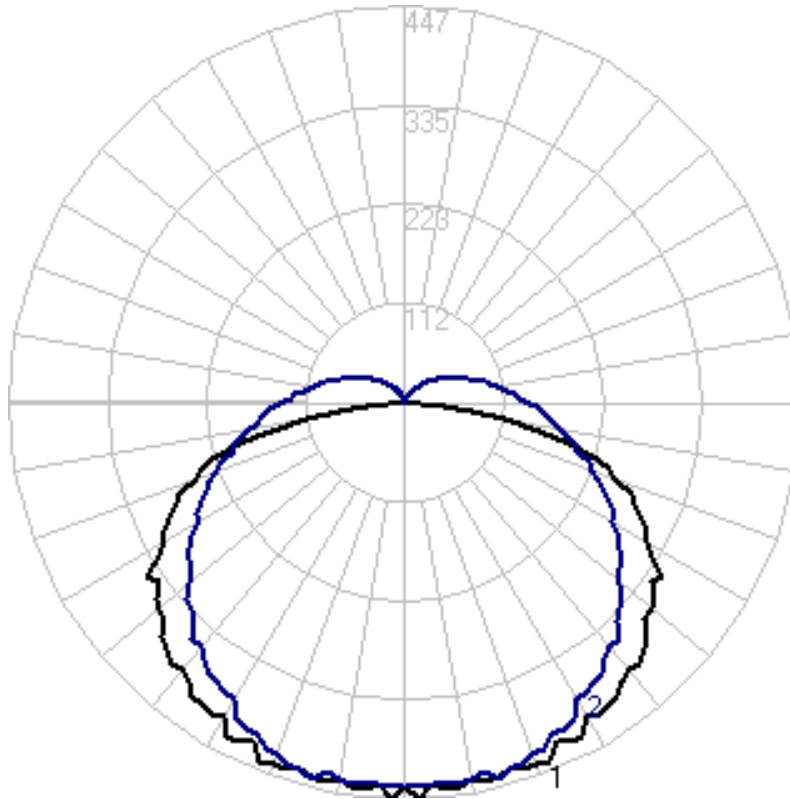
Delivered Lumens (lms)	552
Input Wattage (W)	4.86
Efficacy (LpW)	113.6
Voltage (V)	120

Zonal Lumen Summary

Zone	Lumens	% of Fixture
0-30	116.82	21.20
0-40	191.95	34.80
0-60	345.87	62.70
0-90	492.21	89.20
40-70	217.52	39.40
60-80	112.29	20.40
0-180	551.52	100.00

T5 Integrated LED Lamp

PHOTOMETRY



Curve 1: 0 degree
Curve 2: 90 degree

T5N430

Performance Data

Delivered Lumens (lms)	1999
Input Wattage (W)	18.7
Efficacy (LpW)	106.9
Voltage (V)	120

Zonal Lumen Summary

Zone	Lumens	% of Fixture
0-30	352.78	17.70
0-40	595.11	29.80
0-60	1148.48	57.50
0-90	1764.79	88.30
40-70	812.14	40.60
60-80	471.26	23.60
0-180	1998.64	100.00